



OR4Vet

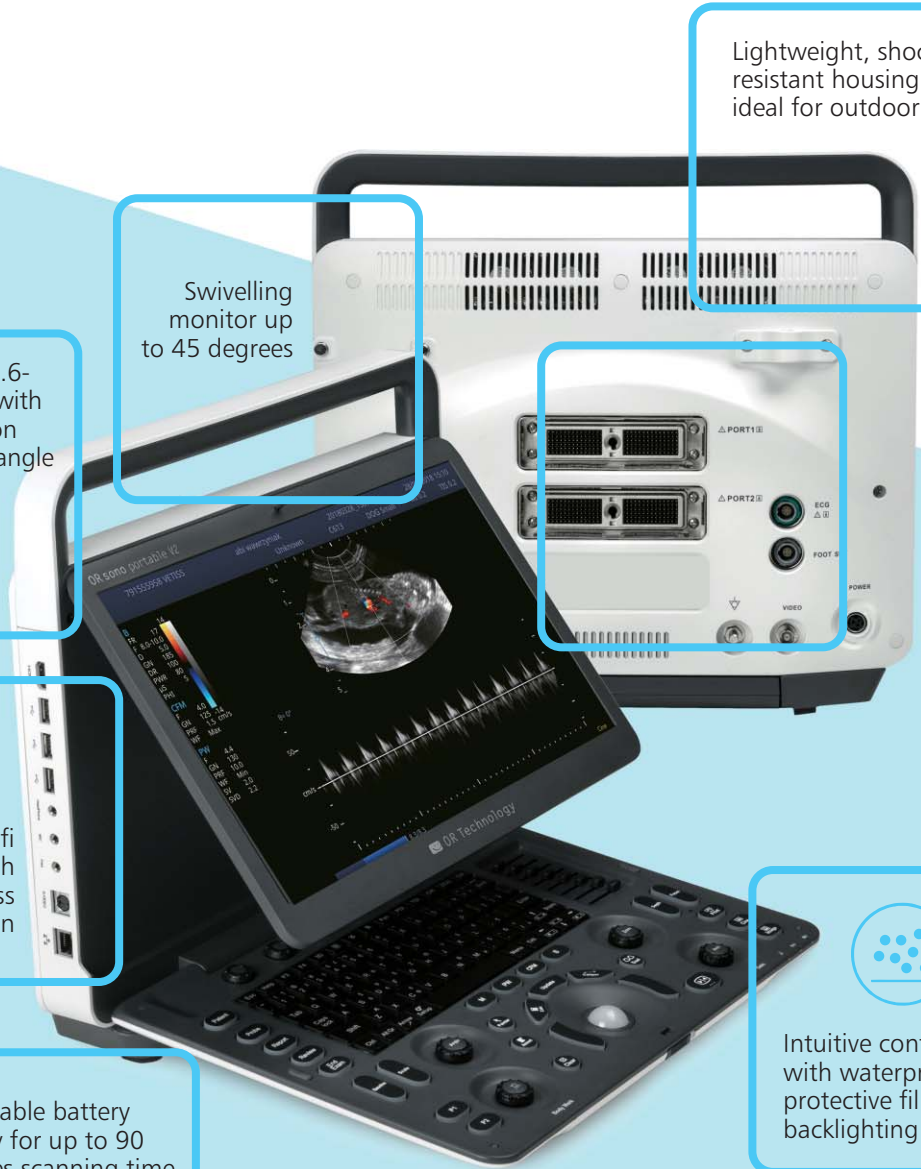
Multimodal image diagnostics
that inspire.

ORsono portable V2 colour doppler ultrasound system

Flexible and budget-friendly for the full spectrum of veterinary medicine



The portable colour doppler ultrasound system



High-resolution 15.6-inch LCD monitor with reflection protection and 180° viewing angle

Swivelling monitor up to 45 degrees

Lightweight, shock-resistant housing - ideal for outdoor use

Two connections for probes

Integrated wifi and Bluetooth for wireless communication

Intuitive control panel with waterproof protective film and backlighting

Removable battery for up to 90 minutes scanning time

Silent and fast system start-up

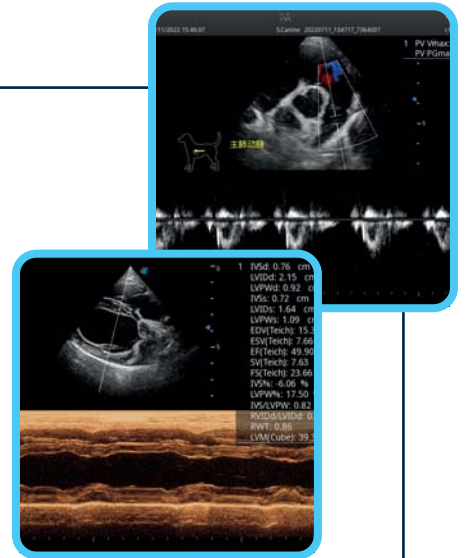
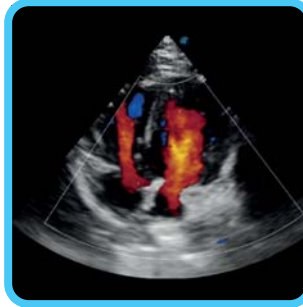
Large selection of probes

Razor-sharp images & intuitive handling

Excellent image quality

The OR sono portable V2 colour doppler ultrasound device features advanced imaging technologies that provide excellent images with high image resolution and clear penetration depth.

The increased image quality makes it possible to examine all animal species faster and more precisely.



Sophisticated features for mobile use

- Transport backpack with integrated trolley function
- Tilttable colour monitor with high resolution for clear and detailed images
- Versatile connection options for flexible use:
 - Two probe connections
 - USB 2.0
 - HDMI output
- Replaceable battery for 90 minutes of scanning time
- Wireless wifi and Bluetooth connection for updating your data

Available probes for small animal and equine medicine

- Convex array transducer
- Linear array transducer
- Phased array transducer
- Hockey stick transducer
- Endo linear transducer

Further probes on request!



 OR sono portable V2

The latest imaging technologies for the best possible diagnosis

C-Field Beam Technology

The optimisation of the sound beam shape and distribution results in clearer and more detailed images. This technology guarantees a more even distribution of the sound beam and ensures a more precise focus on the tissue to be examined.

Multi-Beam Processing Technology

This advanced ultrasound technology offers considerable advantages in terms of image quality and the speed of the ultrasound examination. This is made possible by the parallel processing of several sound beams at the same time.

Spatial Compound Imaging

This technology supports razor-sharp images by combining several shots from different angles.

Scan image processing technology

Image quality is optimised through noise reduction.

Pure Inversion Harmonic Imaging

This method produces particularly clear and precise images by using special sound waves.



Specification of the flexible ultrasound solution

Technical data

Dimensions:

Width: 378 mm

Height: 352 mm

Depth: 114 mm

System weight:

approx. 6.5 kg incl. battery

Device specification

High-resolution monitor

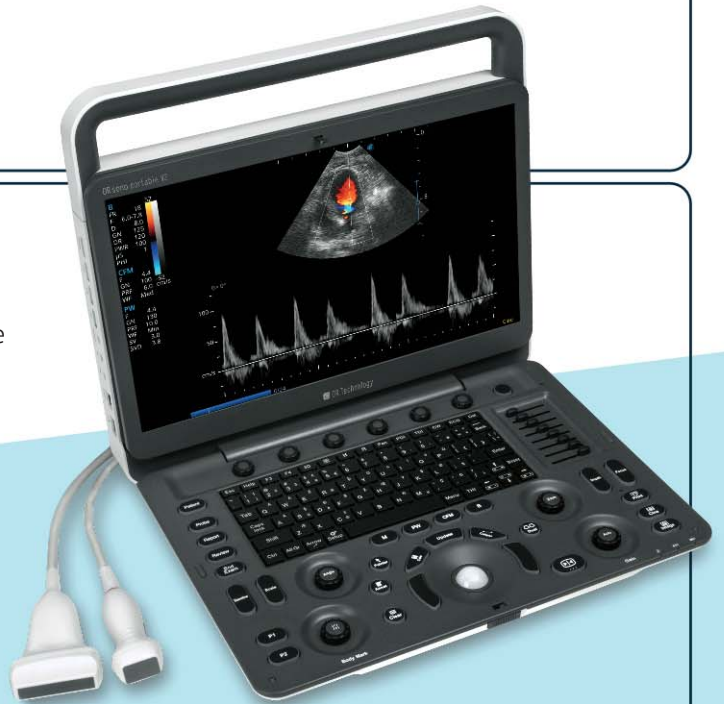
- 15.6-inch LCD monitor, adjustable at a 45° angle
- Anti-glare protection
- 180° viewing angle for indoors and outdoors

Control panel

- Intuitive operation
- Splash-proof and dust-proof keyboard cover
- Automatically adjusted backlight

Other hardware

- 2 probe connections incl. attachable probe holder
- Large cine memory for storage and playback of image sequences
- Compact design for maximum mobility
- Battery operation for flexible use without mains power (up to 90 minutes scanning time)
- Supports the latest probe technology with a frequency range from 1 to 16 MHz
- 1 TB hard drive for sufficient space for storing image and examination results



Extended software functions

- **Picture modes:** B, CFM, M and PW
- **Image optimisation:** automatic adjustment with just one click
- **Image enhancement:** Tissue harmonic imaging, μ -Scan (noise reduction), spatial compound and pure inversion harmonic imaging, dynamic multi-beam technology, power doppler and widescan
- **Advanced image processing:** Auto IMT & Trace, biopsy guide, TEI index, zoom, presets and measurements for pets, horses, livestock and exotic animals
- **DICOM 3.0 compatibility:** Worklist MPPS



OR 4Vet

Multimodal image diagnostics
that inspire.

Everything from a single source: PACS | X-ray | Ultrasound | CT
OR 4Vet. Because image diagnostics only needs one partner.

Headquarters:

OR Technology (Oehm und Rehbein GmbH), Neptunallee 7c, 18057 Rostock, Germany
Tel. +49 381 36 600 500, Fax +49 381 36 600 555
www.or-technology.com, info@or-technology.com

OR Technology UK: Celtic SMR Ltd., Frederick House, Hayston View, Johnston
Haverfordwest, Pembrokeshire SA62 3AQ, United Kingdom
www.celticsmr.co.uk, sales@celticsmr.co.uk

Info hotline: +49 381 36 600 600



All information about the
ORsono portable V2

Specifications subject to revision without notice

The editor strives to impart correct and up to date information. The provided specifications are based on current knowledge and are subject to revision without notice. This brochure is subject to correction. The editor assumes no responsibility for the information being up to date, correct and complete.

All furnished logos, pictures and graphics are property of the particular company and subject to copyright of the licensor. Use, dissemination, distribution or copying of the pictures, logos or text compiled or processed by the editor is subject to our written consent. All rights reserved.